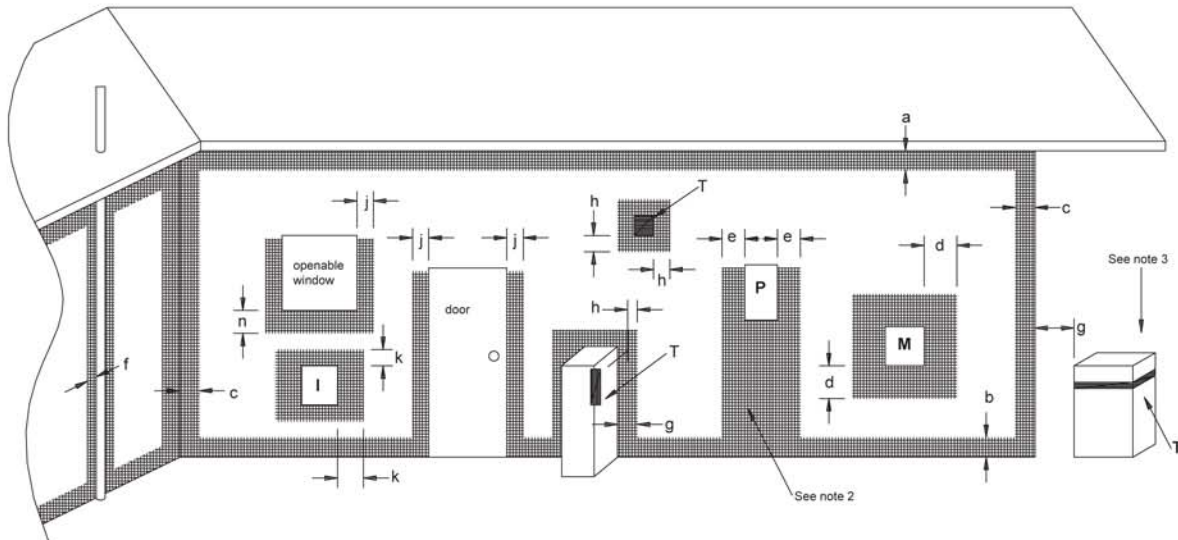


MINIMUM CLEARANCES

REQUIRED FOR HORIZONTAL BALANCED FLUE TERMINALS

OR THE FLUE TERMINALS OF OUTDOOR APPLIANCES



T = Flue terminal
I = Mechanical air inlet

M = Gas meter
P = Electricity meter or fuse box

Shading indicates prohibited areas for flue terminals

a - Below eaves, balconies or other projections:	MIN. CLEARANCE (mm)
Appliances to 50 MJ/h input	300
Appliances over 50 MJ/h input	500
b - From the ground or above a balcony	300
c - From a return wall or external corner	500
d - From a gas meter (M)	1000
e - From an electricity meter or fuse box (P)	500
f - From a drain or soil pipe	150
g - Horizontally from any building structure (unless appliance approved for closer installation) or obstruction facing a terminal	500
h - From any other flue terminal, cowl, or combustion air intake	500
j - Horizontally from an openable window, door, non-mechanical air inlet, or any other opening into a building, with the exception of sub-floor ventilation:	
Appliances up to 150 MJ/h input	500
Appliances over 150 MJ/h input	1500
k - From a mechanical air inlet, including a spa blower	1500
n - Vertically below an openable window, non-mechanical air inlet or any other opening into a building, with the exception of sub-floor ventilation	See table below

- NOTES:**
- All distances are measured vertically or horizontally along the wall to a point in line with the nearest part of the terminal.
 - Prohibited area below electricity meter or fuse box extends to ground level.
 - See clause 5.13.6.6 for restrictions on a flue terminal under a roofed area.
 - See Appendix J, Figure J1(a) and J2(a) for clearances required from flue terminal to a LP Gas cylinder. A flue terminal is considered to be a source of ignition.